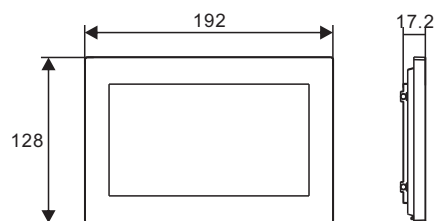
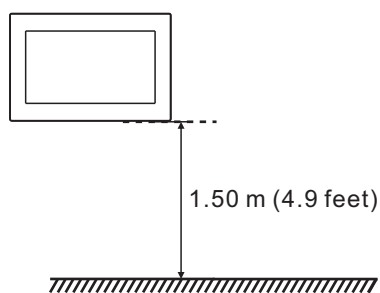


M2249

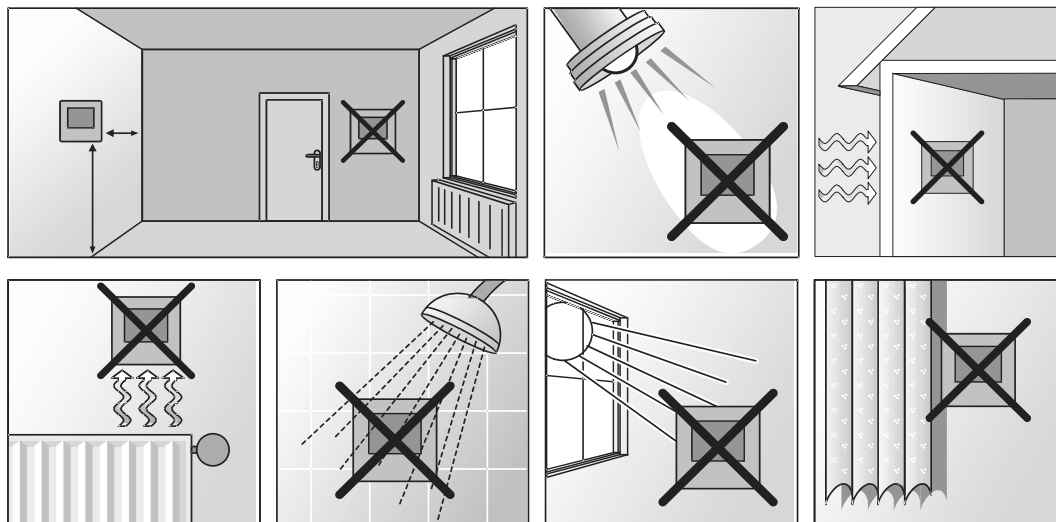
## Product dimension (unit: mm)



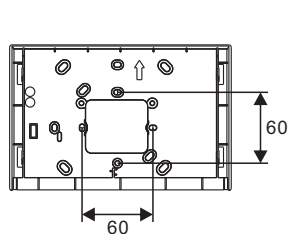
## Installation height



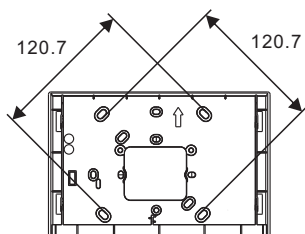
## Location



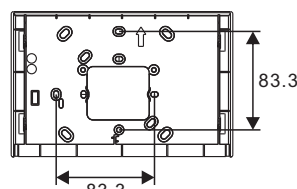
## Surface mounted with the electrical accessory box (unit: mm)



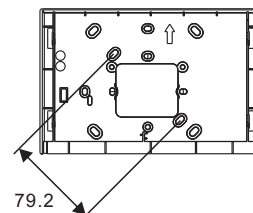
VDE&amp;BS



NEMA(America)



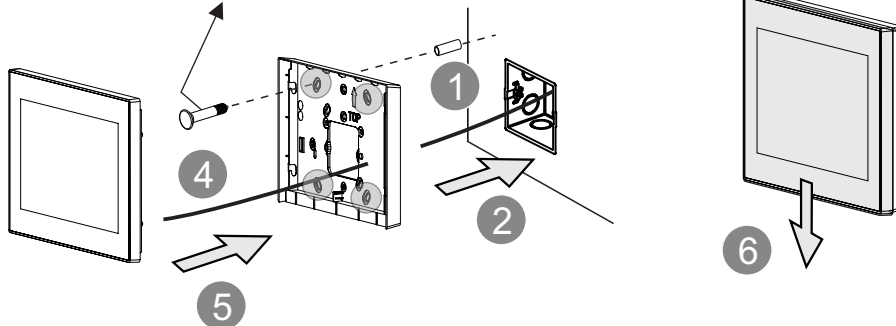
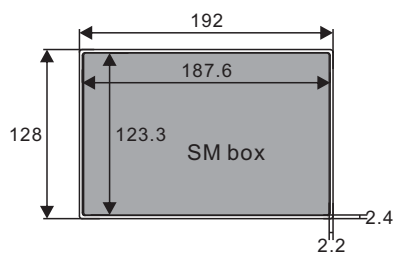
NEMA &amp; Italy



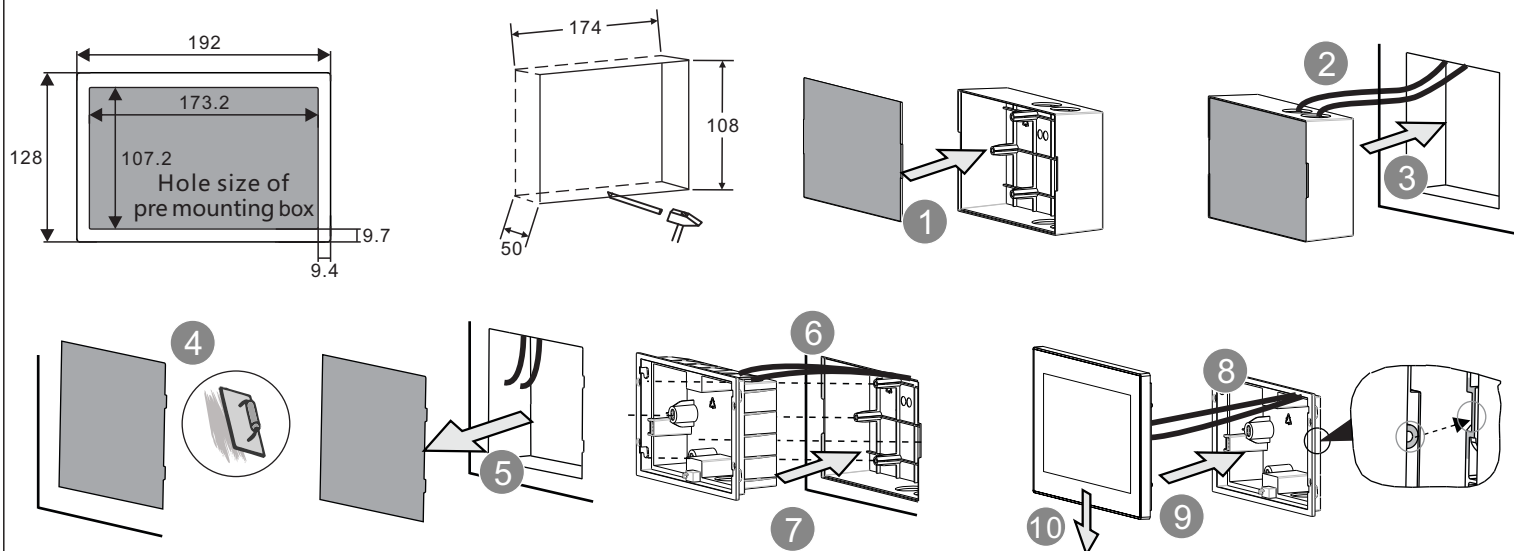
Swiss

3

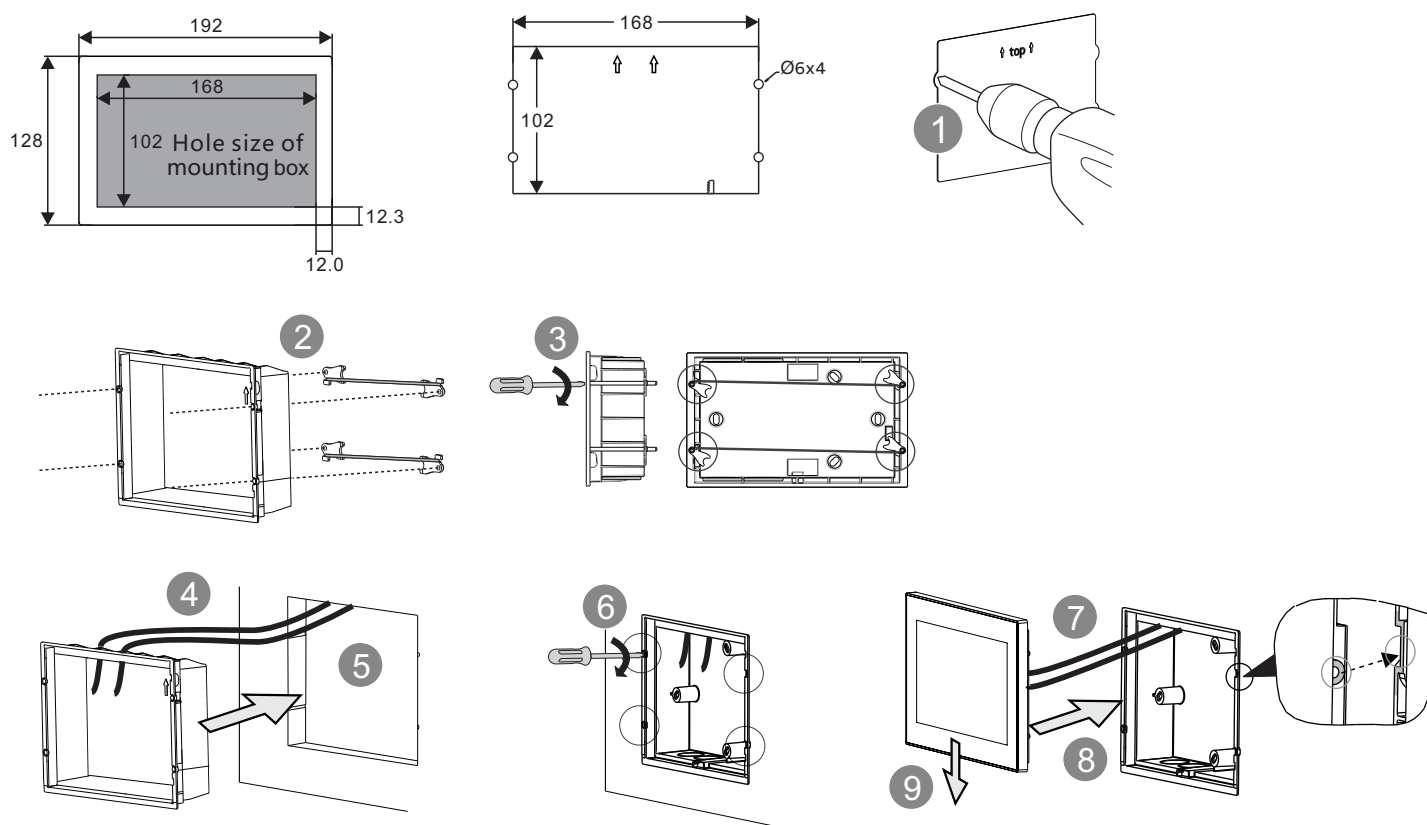
Screw the mounting bracket to accessory box.  
It is recommended to lock the positions marked in gray with screws to better secure the device.



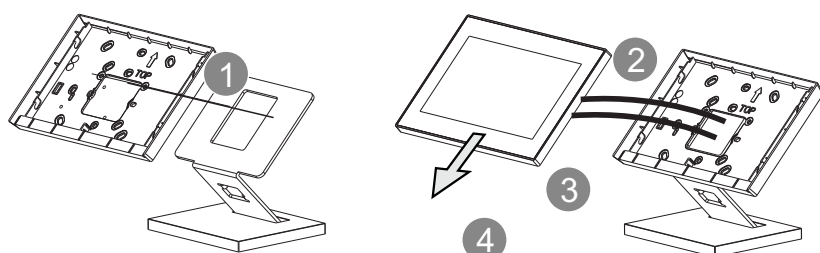
## Flush mounted installation with pre installation box (unit: mm)



## Cavity wall installation (unit: mm)



## Desktop installation



## Dismantle

